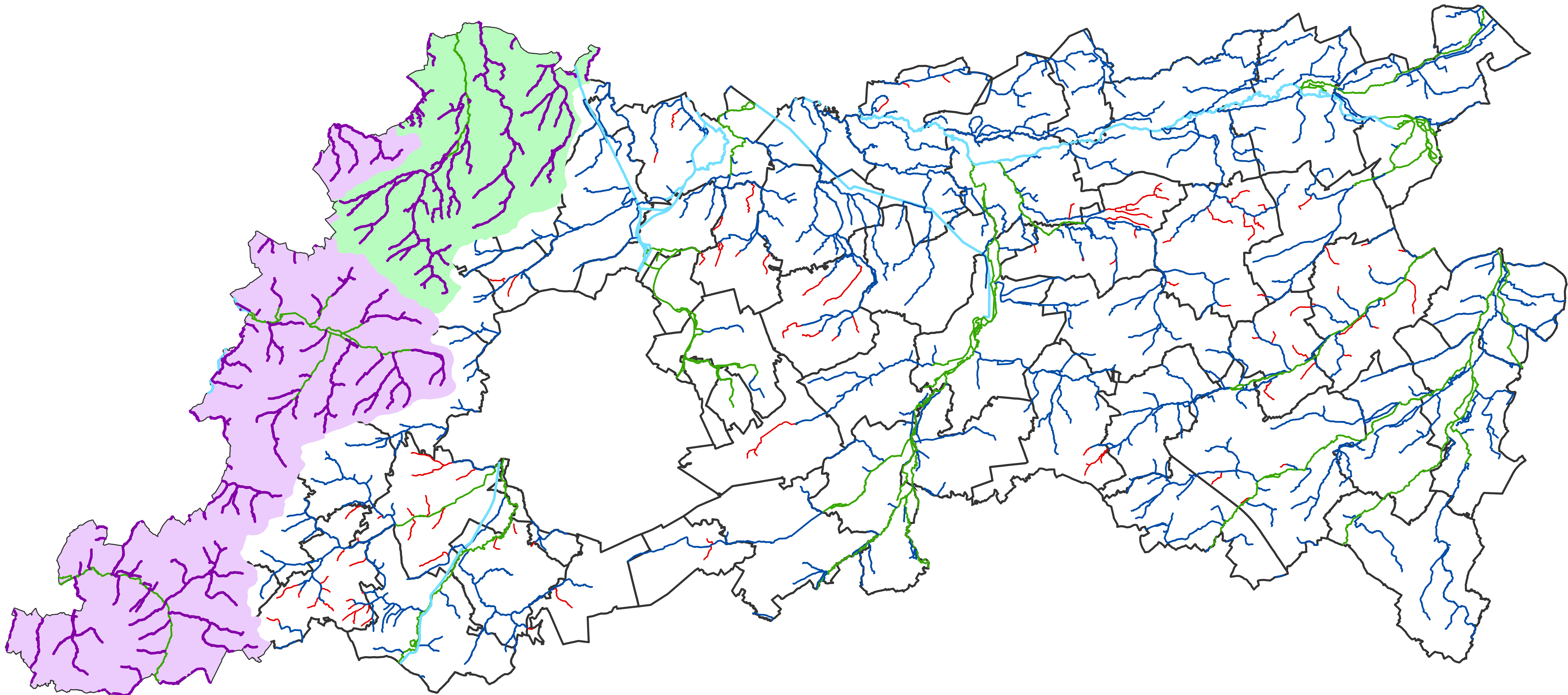



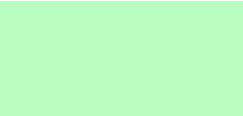






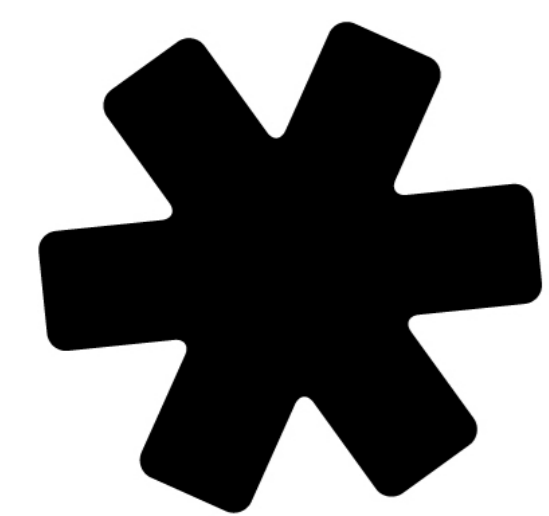
Captatieverbod waterlopen in Vlaams-Brabant

Toestand 11-10-2019



Legende

- | | |
|---|--|
|  captatieverbod |  Denderbekken |
|  Bevaarbaar |  Beneden-Scheldebekken |
|  Onbevaarbaar cat. 1 |  Fusiegemeentegrens |
|  Onbevaarbaar cat. 2 | |
|  Onbevaarbaar cat. 3 | |



**VLAAMS-
BRABANT**

Directie Ruimte/dienst Waterlopen
Captatieverbod waterlopen in Vlaams-Brabant

Bron:
- Vlaamse Hydrografische Atlas - Waterlopen, GDI Vlaanderen (2016)
- Voorlopig referentiebestand gemeentegrenzen, GDI Vlaanderen (2016)

Datum: 11-10-2019

0 5.000 10.000 m

Schaal: 1:80.000

